

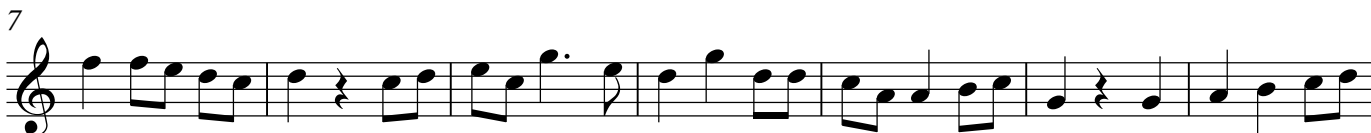
千與千尋主題曲 (C調)

Hole-score: CHONG Ting-ho, Ivan

♩ = 120



5 5 6 5 7 6 5 7 5 5 3 6 4 4 4 3 4 5 5 3 5 5 6
 d r m d s m r s r d l, m d t, t, l, t, d r s, d r m



6 6 6 5 5 5 5 5 6 5 7 6 5 7 5 5 5 3 3 4 4 3 3 3 4 5 5
 f f m r d r d r m d s m r s r r d l, l, t, d s, s, l, t, d r



3 5 5 6 6 6 6 5 5 5 6 6 7 7 7 7 7 7 7 6 6 6 6
 s, d r m f f m r d d m f s s s s s l s f m m m



6 6 6 6 5 5 5 4 4 3 4 4 4 5 5 6 5 6 5 6 6 7 7 7 7 7 7 7 6
 m m f m r d d d t, l, t, t, d r r m r m r m f s s s s s l s f



6 6 6 6 6 6 5 4 4 3 3 4 5 5 3 5 5 6 5 5 5 5
 m m m m f m r d t, l, l, t, d r s, d r m r r r d d